



**PRODUCT COLOR**

Z25W-001-ULPP-2C



Z25-001-ULPP-2C



Z25W-001-ULPP-2C/B

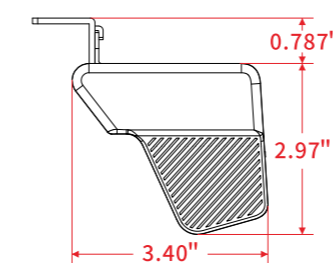
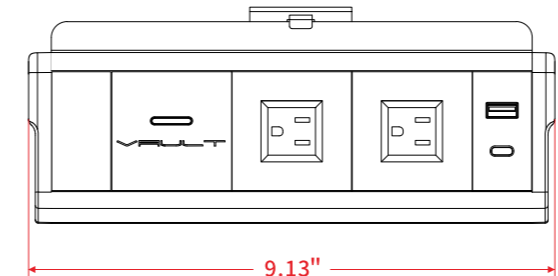


Z25-001-ULPP-2C

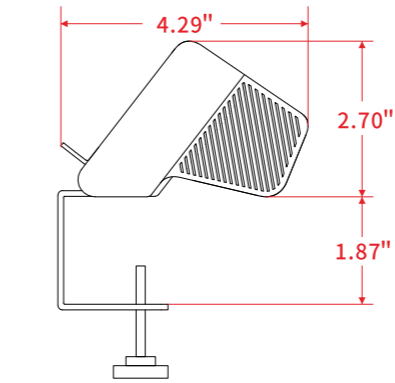
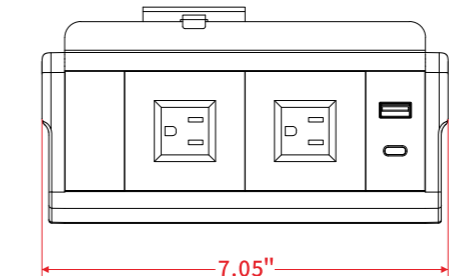


**PRODUCT SIZE**

Z25W: 9.13" x 4.29" x 2.70"



Z25: 7.05" x 4.29" x 2.70"



**INSTALLATION GUIDE**

**INSTALL UNDER THE DESKTOP**

Attach the under mount brackets to the unit by sliding the bracket into the groove of the unit and then affix the bracket into the table using the included screws.

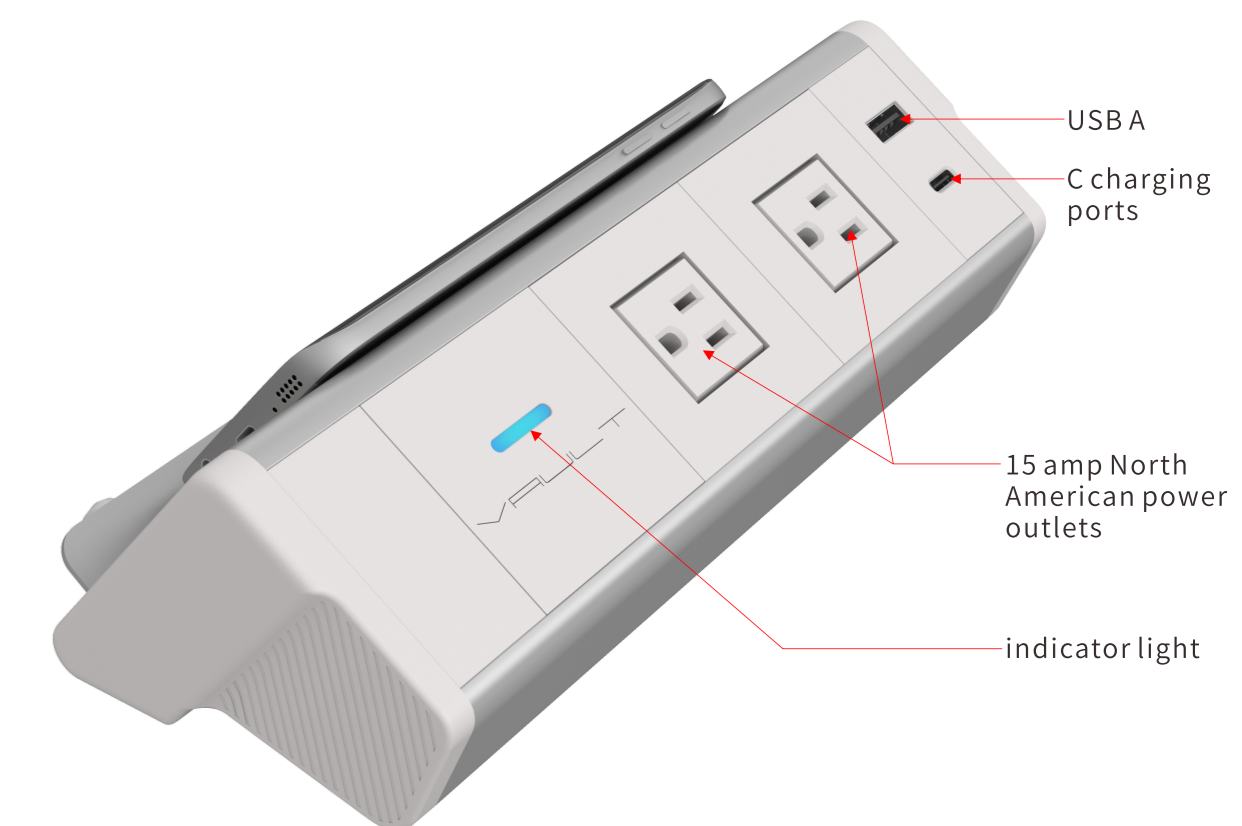


**INSTALL ON THE DESKTOP**

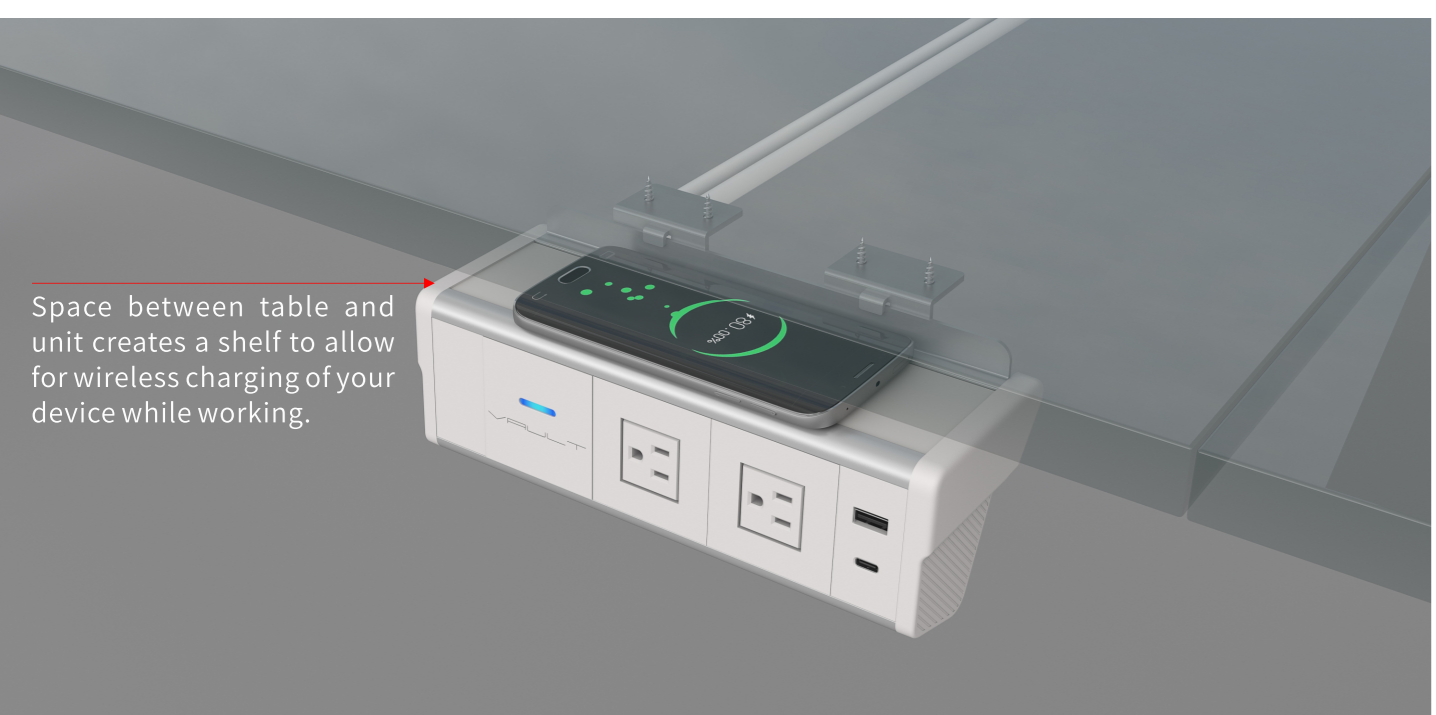
Attache the C Clamp mount into the groove of the unit and then screw the clamp finger tight against the under side of the table to create a semi permanent installation.



**Z25/Z25W**  
SMART SOCKET



**UNDER THE DESKTOP**



Space between table and unit creates a shelf to allow for wireless charging of your device while working.

**ON THE DESKTOP**

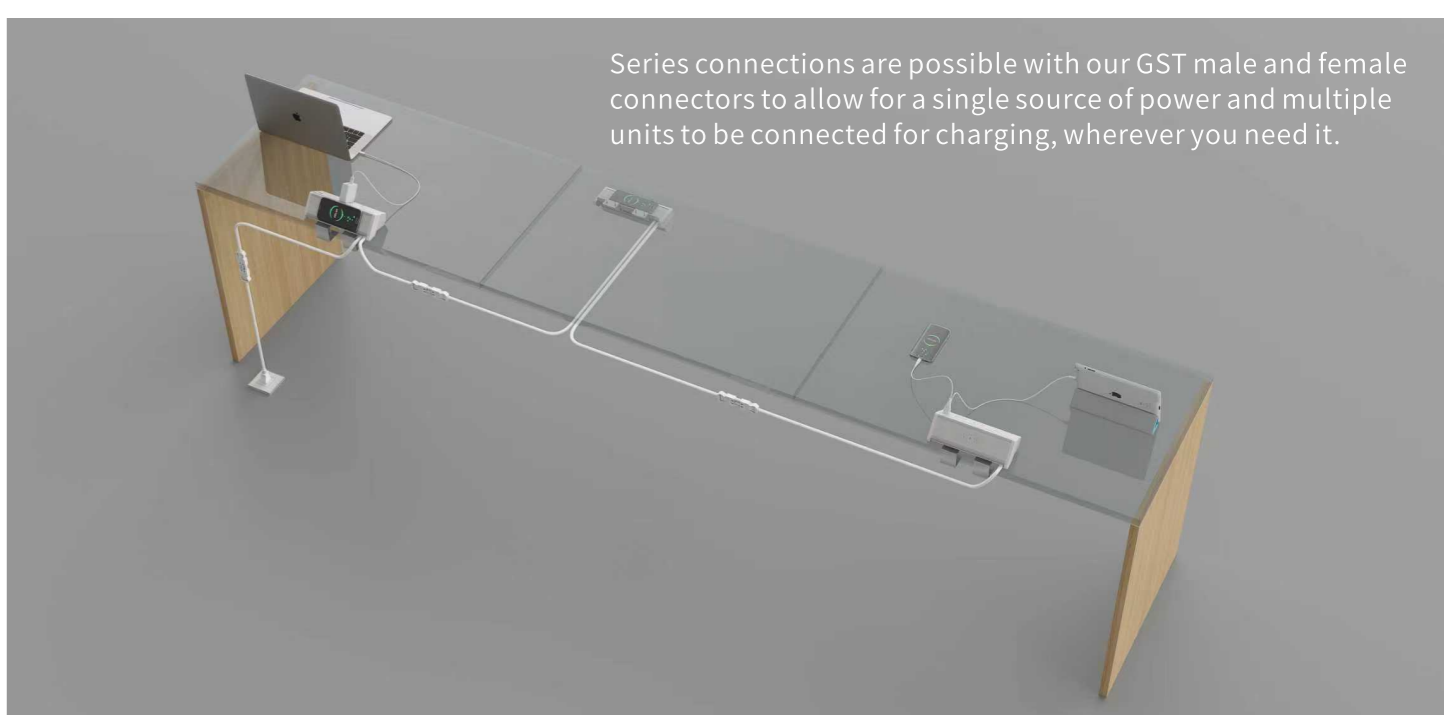
The indicator light will turn on when the device is wirelessly charging.



**ON THE DESKTOP**



**DAISY CHAIN CAPABILITY FOR THE Z-25/Z25W**



Series connections are possible with our GST male and female connectors to allow for a single source of power and multiple units to be connected for charging, wherever you need it.